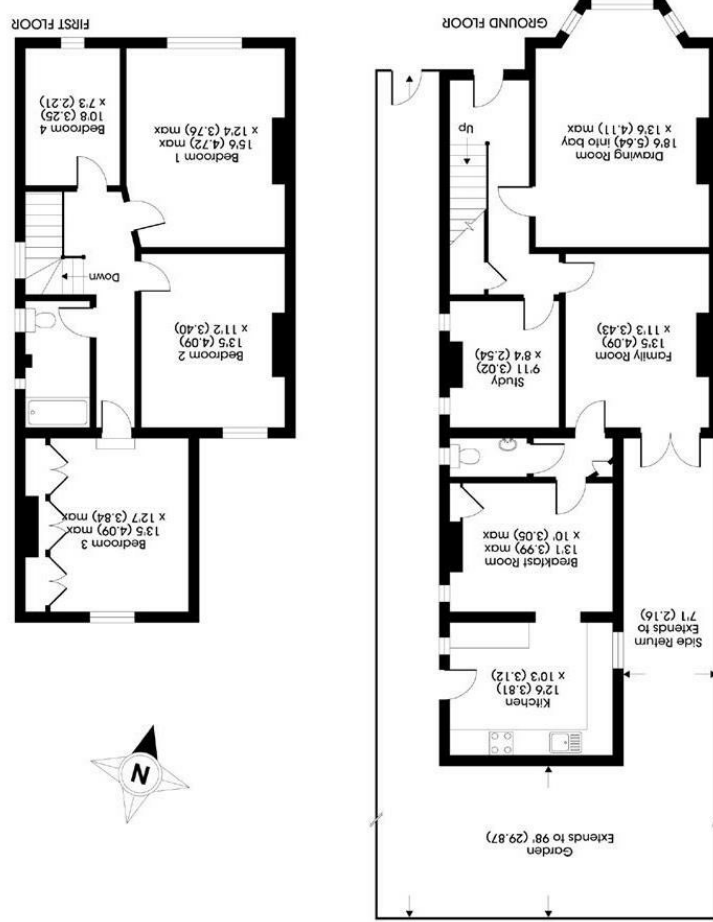
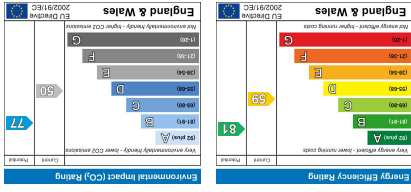


All appliances listed in these details are only 'as seen' and have not been tested by Gibson Lane, nor have we sought certification of warranty or service, unless otherwise stated. Measurements, areas and distances are approximate. Floor plans and photographs are for guidance purposes only and must not be relied upon for any purpose. These details are offered on the understanding that all negotiations are made through this company. Neither these particulars, nor verbal representations, form part of any offer or contract, and their accuracy cannot be guaranteed.



APPROX. GROSS INTERNAL FLOOR AREA 1700 SQ. FT 157.9 SQ METRES

34 Richmond Road
 Kingston upon Thames
 Surrey
 KT2 5ED
 www.gibsonlane.co.uk
 Tel: 020 8546 5444





96 Chestnut Grove
 New Malden KT3 3JS



Chestnut Grove

New Malden KT3 3JS

£1,025,000

An elegant Victorian semi detached family home offering exceptionally spacious accommodation arranged over two floors complemented by a delightful 98ft South facing rear garden.

Description

An elegant Victorian semi detached home offering exceptionally spacious accommodation of 1700sqft. The generous ground floor surprisingly offers four independent reception rooms and a modern high specification kitchen. The impressive principle rooms are complemented by high ceilings and large sash windows capturing an abundance of natural light. On the upper floor there are four bedrooms and a family bathroom. Externally there is a delightful South facing rear garden of almost 100ft and off street parking to the front.

Situation

Chestnut Grove is located in the sought after Groves Conservation area convenient for New Malden High Street and station giving direct access into Waterloo and the A3 which serves both London & the M25. New Malden High Street offers an array of shops, restaurants and bars. The standard of schooling in the immediate area is excellent within both the private & state sectors. The area has an extensive range of leisure facilities including golf courses, tennis clubs, sailing, riding schools and private & public health clubs.

Tenure: Freehold

Local Authority: New Malden

